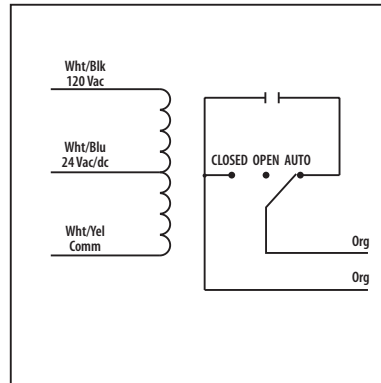




## 20 Amp Power Control Relays

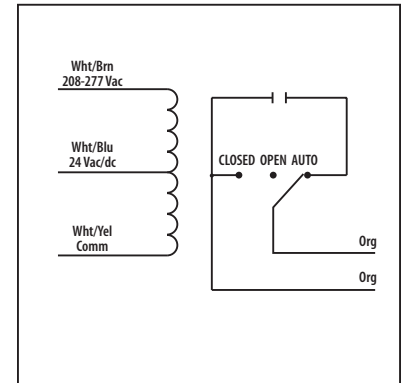
### RIB2401SB

Enclosed Relay 20 Amp SPST-N/O + Override with  
 24 Vac/dc/120 Vac Coil



### RIB2402SB

Enclosed Relay 20 Amp SPST-N/O + Override with  
 24 Vac/dc/208-277 Vac Coil



### ■ SPECIFICATIONS

**# Relays & Contact Type:** One (1) SPST Continuous Duty Coil  
**Expected Relay Life:** 10 million cycles minimum mechanical  
**Operating Temperature:** -30 to 140° F  
**Operate Time:** 18ms  
**Relay Status:** LED On = Activated  
**Dimensions:** 2.30" x 3.20" x 1.80" with .50" NPT Nipple  
**Wires:** 16', 600V Rated  
**Approvals:** UL Listed, UL916, UL864, C-UL  
 California State Fire Marshal, CE, RoHS  
**Housing Rating:** Plenum, NEMA 1  
**Gold Flash:** No  
**Override Switch:** Yes

#### Contact Ratings:

20 Amp Resistive @ 277 Vac  
 20 Amp Ballast N/O @ 277 Vac  
 10 Amp Ballast N/C @ 277 Vac  
 10 Amp Tungsten N/O @ 120 Vac  
 770 VA Pilot Duty @ 120 Vac  
 1,110 VA Pilot Duty @ 277 Vac  
 2 HP @ 277 Vac  
 1 HP @ 120 Vac

#### Coil Voltage Input:

24 Vac/dc ; 120 Vac ; 50-60 Hz (RIB2401SB)  
 24 Vac/dc ; 208-277 Vac ; 50-60 Hz (RIB2402SB)  
 Drop Out = 2.1 Vac / 3.8 Vdc  
 Pull In = 18 Vac / 22 Vdc

#### Coil Current:

50 mA @ 18 Vac	33 mA @ 22 Vdc
83 mA @ 24 Vac	35 mA @ 24 Vdc
47 mA @ 120 Vac (RIB2401SB)	47 mA @ 30 Vdc
69 mA @ 208-277 Vac (RIB2402SB)	

#### Notes:

- » Order Normally Closed by adding "-NC" to end of model number
- » Order with Momentary Override Switch by adding "-MNO" to end of model number

### Notes