

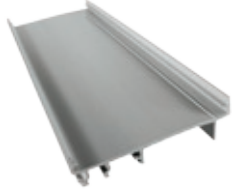


**Functional Devices, Inc.**  
 310 South Union Street  
 P.O. Box 368  
 Russiaville, IN 46979

**Office** 765.883.5538  
**Sales** 800.888.5538  
**Fax** 765.883.7505  
**Email** sales@functionaldevices.com

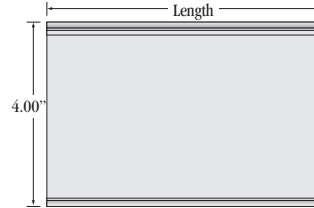
## AT4 SERIES

### MOUNTING TRACK 4.00" Wide AdapTrack® for Relays



#### ■ SPECIFICATIONS

- Flame Rated:** 94-5V
- DIN Rail Sizes:** 32 mm x 15 mm asymmetrical DIN rail EN50035  
 35 mm x 7.5 mm asymmetrical DIN rail EN50022  
 22.4 mm x 6.9 mm symmetrical NEMA A Series rail
- Approvals:** UL Component Recognized, USA & Canada CE Approved
- Mounting:** AT4 Series AdapTrack® snaps onto the three most common DIN rail sizes to provide mounting for 4.00" wide track-mountable relays, current sensors, or power supplies.



#### AT4 SERIES SELECTION GUIDE

MODEL #	WIDTH	LENGTH	DIN RAIL SIZES
AT4-2	4.00"	2.00"	3 Most Common (see general specs to the left)
AT4-6	4.00"	6.00"	3 Most Common (see general specs to the left)
AT4-12	4.00"	12.00"	3 Most Common (see general specs to the left)
AT4-24	4.00"	24.00"	3 Most Common (see general specs to the left)
AT4-48	4.00"	48.00"	3 Most Common (see general specs to the left)

## NOTES